

**xylem**  
Let's Solve Water



**e-HM**

TAILOR-MADE FOR THE INDUSTRY



**GEOFLUID**

Evolving solid solutions.



**LOWARA**

a xylem brand

# For when a reliable essential.

## Temperature control

Electronic Data Processing  
Laser Equipment  
Industrial Refrigeration  
Heating and Cooling in industrial processes  
Variable speed drives



Food & Beverage  
Liquid Boosting and Transfer  
Mixing/Dosing



Water treatment  
Ultra and nano filtration Systems

Reverse Osmosis  
Softening, demineralizing and ionizing systems  
Dead end filtration

# water supply is



**16.000**  
per hour

**Industrial washing & cleaning**  
Degreasing and Washing of product equipment  
Washing Machines, including car washing  
Mobile Washing Units  
Cleaning Units



per hour  
**4.500**

**Chemical & pharmaceutical industries**  
Distilling System  
Evaporation

# Here comes the water.

## Minimal leakage risk.

The pump body has a maximum of two seal points to minimize the leakage risk.



## Supremely efficient.

State-of-the-art hydraulics with best-in-class efficiency. High efficiency motors as standard. Can be equipped with Hydrovar pump controller or permanent magnet motor with embedded VFD when a speed control helps save energy.



## Tailor-made for your application.

Product range to fit most applications which provides a full range of solutions: our e-HM comes in a variety of materials and configurations designed to fulfil all the requirements of the most common systems.



## Robust industrial design.

Thick sheet metal in pump body; long lifetime. Special bearing force reduction design for long bearing life. Oversized motors available for high density liquids.



## Easy to build in into equipment.

Same distance to suction port on most models.



## Flexible solutions.

Compact version for confined spaces. High efficiency version where low energy consumption is a priority.



# Extensive range.

Tailor-made to your needs.

## Material options:

Pump  
 AISI 304  
 AISI 316  
 Electropolished and passivated AISI 316  
 Victaulic connections as option

O-rings  
 EPDM  
 FPM  
 FFPM

Mechanical face seal  
 Carbon  
 Ceramic  
 Silicon carbide

## Motor options:

Standard Voltage  
 50 Hz:  
 1~: 220-240 V  
 3~: 220-240/380-415V, up to 3 kW  
 380-415/660-690V, from 4 kW included

60 Hz  
 1~: 230V  
 3~: 220-380V

50/60 Hz  
 3~: 230-400V 50 Hz / 265-460V 60 Hz  
 3~: 400-690V 50 Hz / 460V 60 Hz



Multiple Voltage options available

1-2 sizes oversized motors

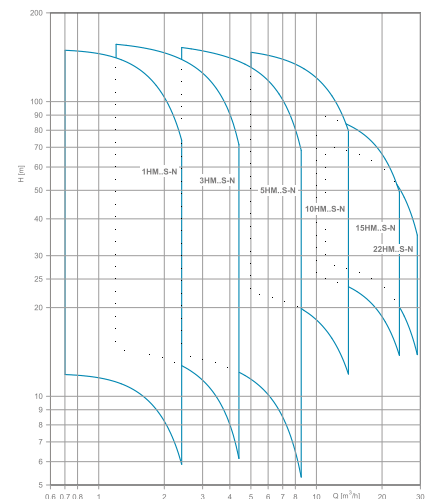
PTC in windings

Heated motor for chiller applications

Higher ambient temperature  
 (up to 50°C) for warm environments

Size	Flow m <sup>3</sup> /h	Efficiency	Up to 6 stages	Above 7 stages
1HM	0,7÷2,4	49%		From 0,3 to 0,75kW
3HM	1,2÷4,4	58%		From 0,55 to 1,5kW
5HM	2,4÷8,5	69%		
10HM	5÷14	71%		
15HM	8÷24	72%		
22HM	11÷29	71%		

Performance curve,  
e-HM 50Hz



# Variable-speed drive options.

Xylem variable-speed pump controllers reduce energy consumption up to 70% compared to full speed pump and include VSD, transmitters and micro processor controller.

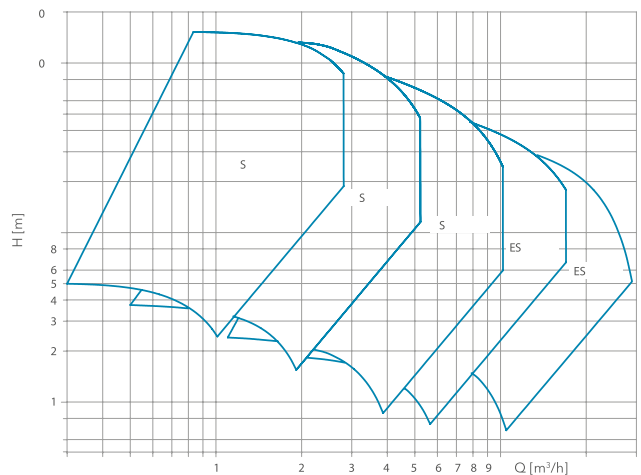
## e-HM smart (up to 2,2KW).

e-HM smart is fitted with high efficient IE5 permanent magnet motors and integrated variable speed drive. A smart, easy-to-set integrated drive can operate in a sensed or sensorless mode in single, twin or multi-pump systems of up to three pumps, with no need for an external control panel or a PLC. The drive also includes BACnet or Modbus and Wi-Fi as an option.

Works with your system to make it efficient  
Power supply: single phase 50 or 60 Hz



### Performance curve, e-HM smart



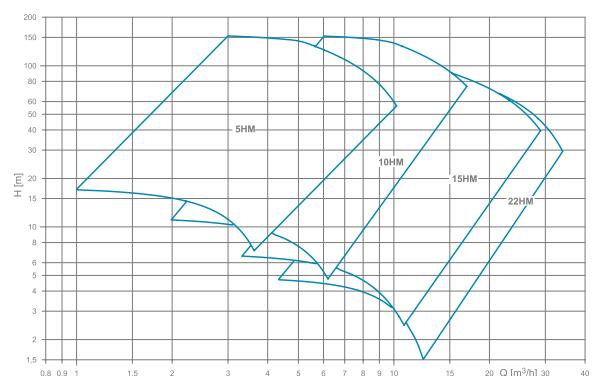
## e-HM hydrovar® X (from 3 kW to 5,5 kW)

Fully flexible variable-speed drive with setting options that optimise pump function. Hydrovar X is fitted with an high efficient IE5 permanent magnet assisted reluctance motor equipped with advance control for the highest efficiency level and to extend the lifetime of the motor.

Multipump capability as standard with no single failure point  
Remote control and management via app  
Works with your system to make it efficient  
Power supply: three phase 50 or 60 Hz



### Performance curve, e-HM hydrovar® X



	HVX	HVX +
<b>Display</b>	LED	Graphic color
<b>Controls</b>		
Pressure	•	•
Flow		•
Temperature		•
Level		•
<b>Multi-Pump</b>	Up to 4 pumps	Up to 8 pumps
<b>Extended I/Os</b>		•

# Xylem |zīl əm|

- 1) The tissue in plants that brings water upward from the roots;
- 2) a leading global water technology company.

Were a global team unified in a common purpose: creating advanced technology solutions to the worlds water challenges. Developing new technologies that will improve the way water is used, conserved, and re-used in the future is central to our work. Our products and services move, treat, analyze, monitor and return water to the environment, in public utility, industrial, residential and commercial building services settings. Xylem also provides a leading portfolio of smart metering, network technologies and advanced analytics solutions for water, electric and gas utilities. In more than 150 countries, we have strong, long-standing relationships with customers who know us for our powerful combination of leading product brands and applications expertise with a strong focus on developing comprehensive, sustainable solutions.

**For more information on how Xylem can help you, go to [www.xylem.com](http://www.xylem.com)**

